

YOULECAR



YOUR FULLY CUSTOMIZABLE  
TECAR THERAPY



# CHOOSE THE IDEAL CONFIGURATION FOR YOUR NEEDS AND THOSE OF YOUR PATIENTS

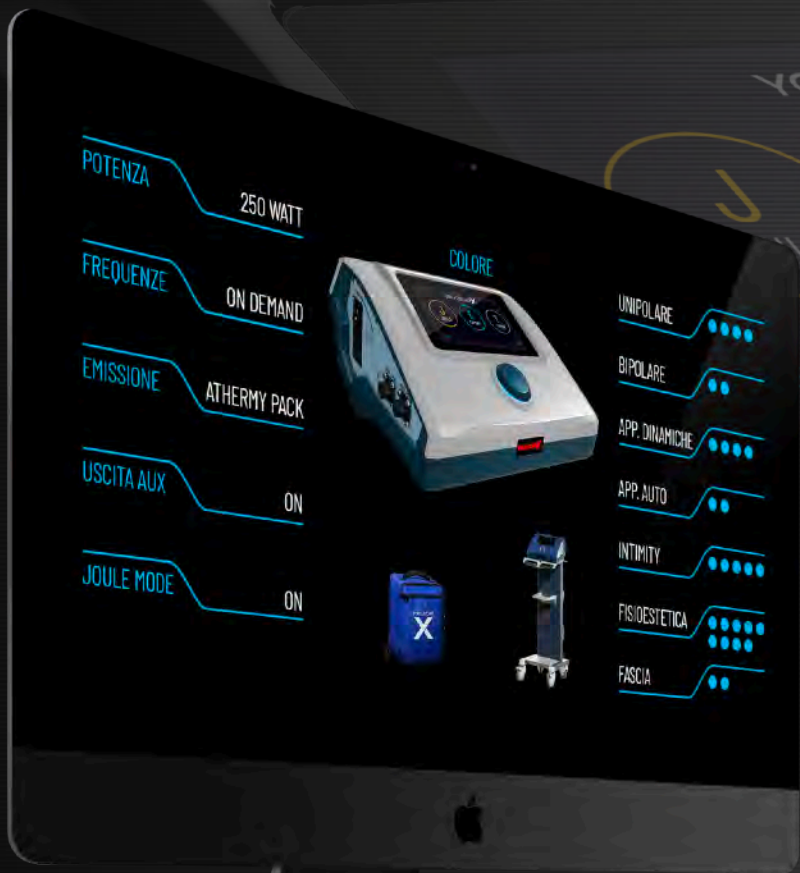
## WHAT FIELD DO YOU WORK IN?

- SPORTS REHABILITATION
- DERMAL-FUNCTIONAL REHABILITATION  
AND PHYSIO-AESTHETICS
- PELVIC FLOOR REHABILITATION
- MUSCULOSKELETAL REHABILITATION
  - CRONIC & ACUTE
  - POST-TRAUMATIC
  - POST-SURGICAL

## WHAT TECHNIQUES DO YOU COMBINE?

- FASCIA THERAPY
- MANUAL THERAPY
- THERAPEUTIC EXERCISE
- OSTHEOPATY

YOUJECARX



You can customize every aspect of your new YoutecarX, from technical features to accessories and colour.

[www.youtecarx.com](http://www.youtecarx.com)

YOUTECARX



YOU!ECAR X

J  
JOULE

E  
EXPERT

T  
TUTOR

WHAT CAN BE  
CONFIGURATED?

YOU!ECAR X

The image shows a sleek, black, rectangular device with a large, illuminated screen. The screen displays the 'YOU!ECAR X' logo at the top. Below the logo, there are three circular buttons: a yellow one labeled 'J JOULE', a cyan one labeled 'E EXPERT', and a green one labeled 'T TUTOR'. The device has a modern, minimalist design with a dark, possibly metallic or high-quality plastic, finish. The lighting is dramatic, highlighting the screen and the device's edges against a dark background.

# EVERYTHING!

CONFIGURE NOW





## CONFIGURATION STEP BY STEP

Create your own Tecar Therapy

### Core & System

Choose the power, frequencies, and forms of emission

### Aux Output

The doorway to a whole world of new treatment possibilities

### Accessories

Applicators designed to reach specific therapeutic targets

### Practicality

Bag, trolley, and consumables to complete your own configuration

### Finish

YoutecarX is available in different colours. Choose yours!

## POWER

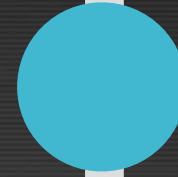
150 Watt (included)  
200 Watt  
250 Watt

## FREQUENCY

500 KHz (included)  
Standard Pack 3 freq.  
(500 KHz / 750 KHz / 1 MHz)  
On Demand Pack  
(500 KHz + a choice of three freq. from 300 kHz to 1 MHz)

## EMISSION

Continuous (included)  
Sensitive Athermy  
(HEA) High Energy Athermy  
Athermy Pack (Sensitive + HEA)



### Core & System

Choose the power, frequencies, and forms of emission



### Aux Output

The doorway to a whole world of new treatment possibilities



### Accessories

Applicators designed to reach specific therapeutic targets



### Practicality

Bag, trolley, and consumables to complete your own configuration



### Details

YoutecarX is available in different colours. Choose yours!

# AUX OUTPUT

## BOOST THE POWER OF YOUTECARX

The multifunction AUX output opens the door to the highest performance levels using special accessories and application systems

**JOULE MODE:** an innovative operating method that includes a dedicated hardware and software system



### Core & System

Choose the power, frequencies, and forms of emission



### Aux Output

The doorway to a whole world of new treatment possibilities



### Accessories

Applicators designed to reach specific therapeutic targets



### Practicality

Bag, trolley, and consumables to complete your own configuration



### Details

YoutecarX is available in different colours. Choose yours!

# ACCESSORIES

**MORE THAN  
40 ACCESSORIES**



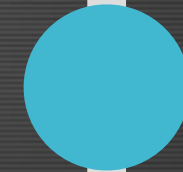
## Core & System

Choose the power, frequencies, and forms of emission



## Aux Output

The doorway to a whole world of new treatment possibilities



## Accessories

Applicators designed to reach specific therapeutic targets



## Practicality

Bag, trolley, and consumables to complete your own configuration

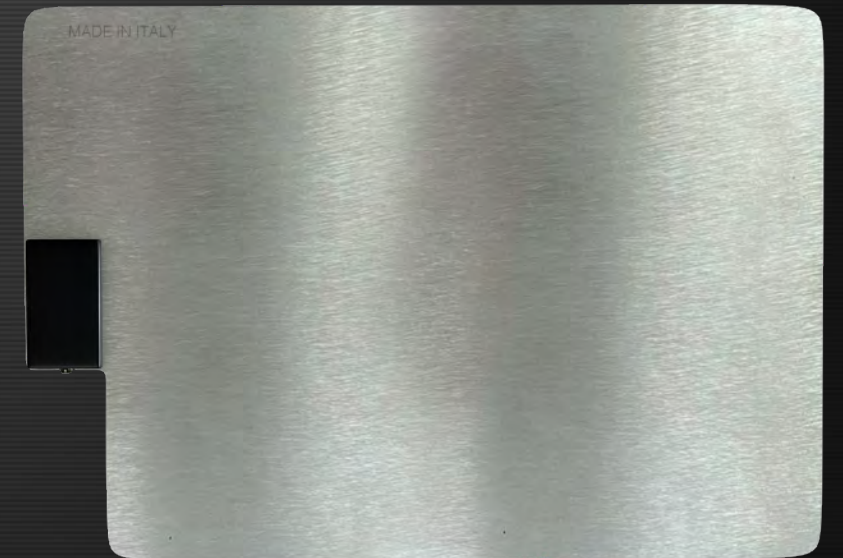
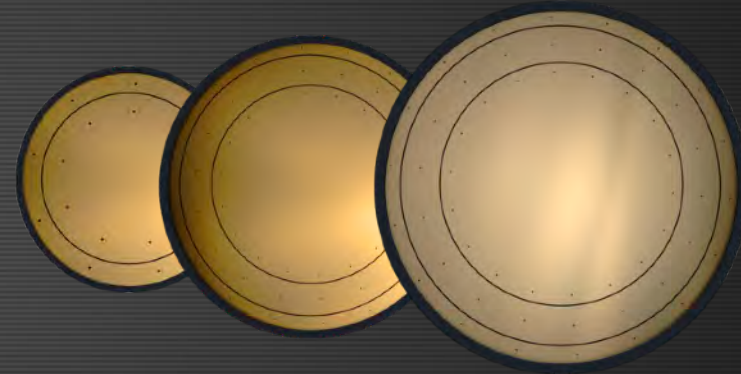
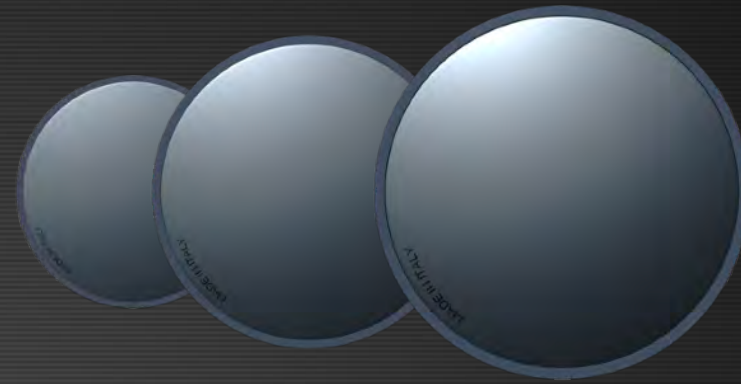


## Details

YoutecarX is available in different colours. Choose yours!

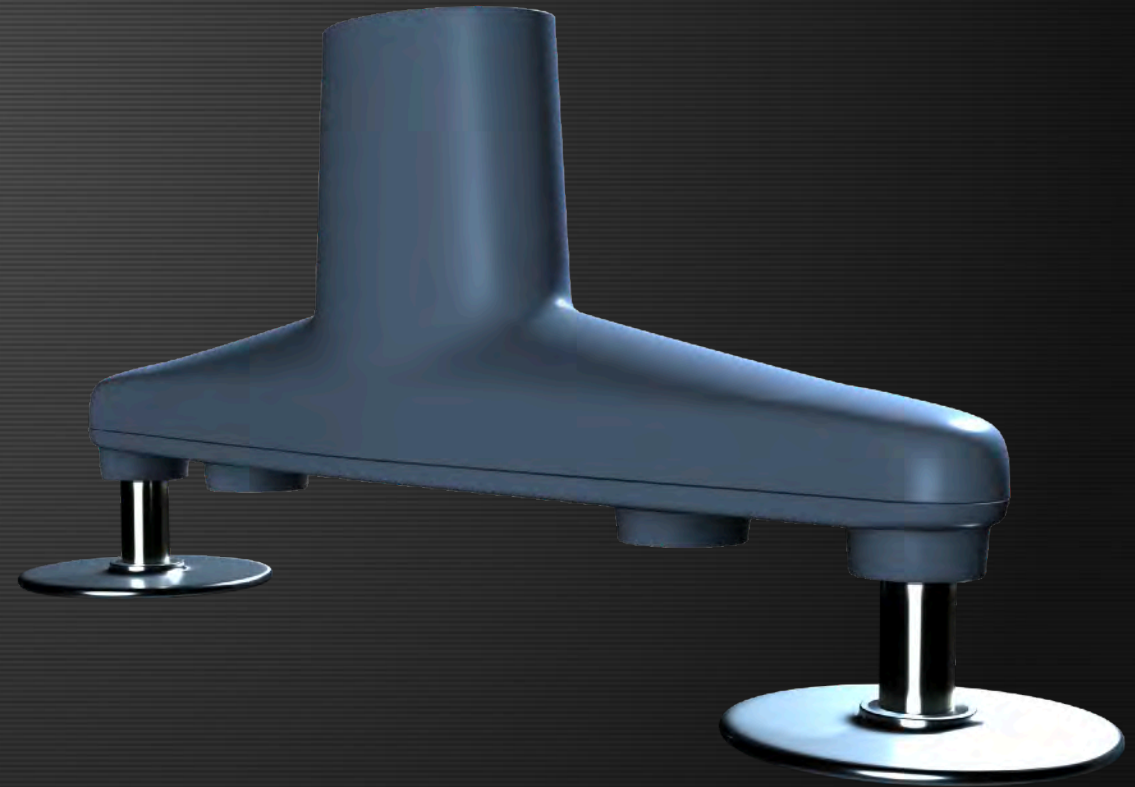
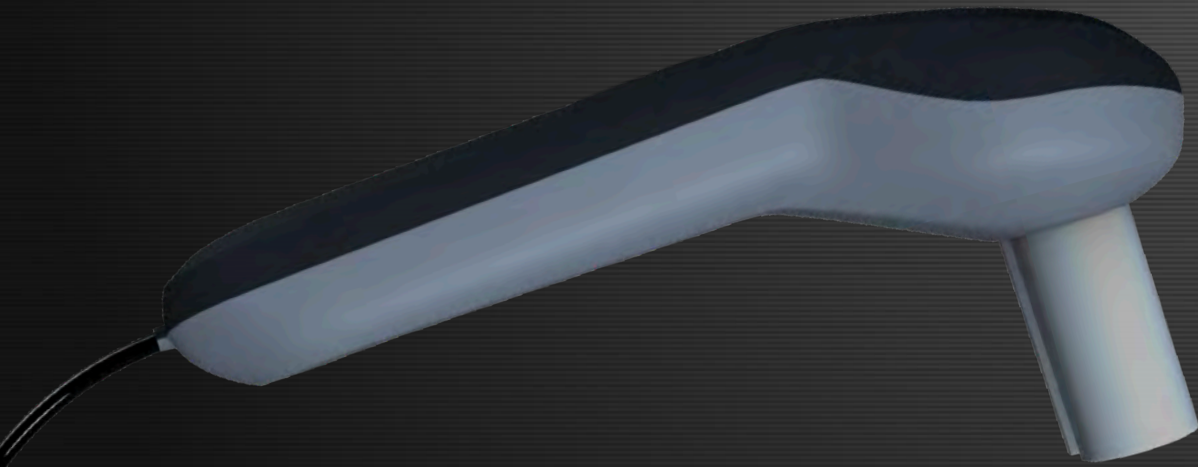
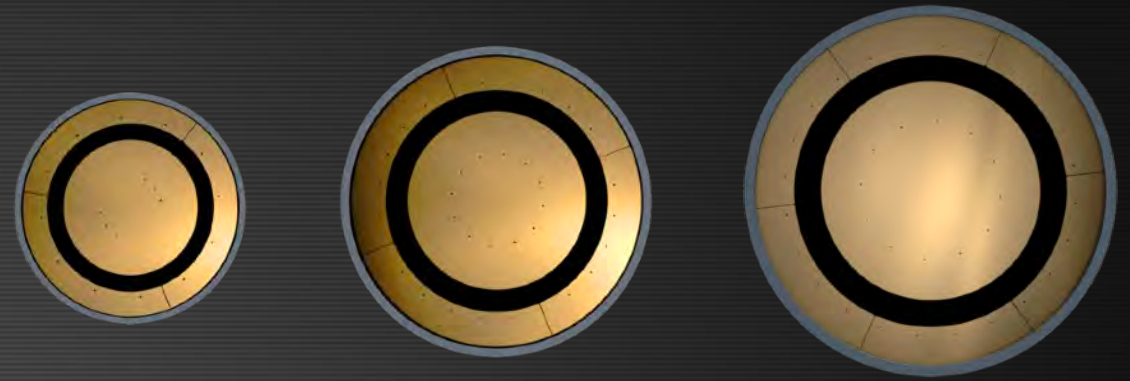
# UNIPOLAR

CODE	DESCRIPTION
YTX-MAN-U	Handpiece for Unipolar Applications Res/Cap
CAVO-U	Cable for Unipolar Applications Res/Cap
YTX-ELCAP41	Capacitive Unipolar Electrode Ø 41 mm
YTX-ELCAP61	Capacitive Unipolar Electrode Ø 61 mm
YTX-ELCAP81	Capacitive Unipolar Electrode Ø 81 mm
YTX-ELRES41	Resistive Unipolar Electrode Ø 41 mm
YTX-ELRES61	Resistive Unipolar Electrode Ø 61 mm
YTX-ELRES81	Resistive Unipolar Electrode Ø 81 mm
ELNH	Steel Neutral Plate 14x20 cm



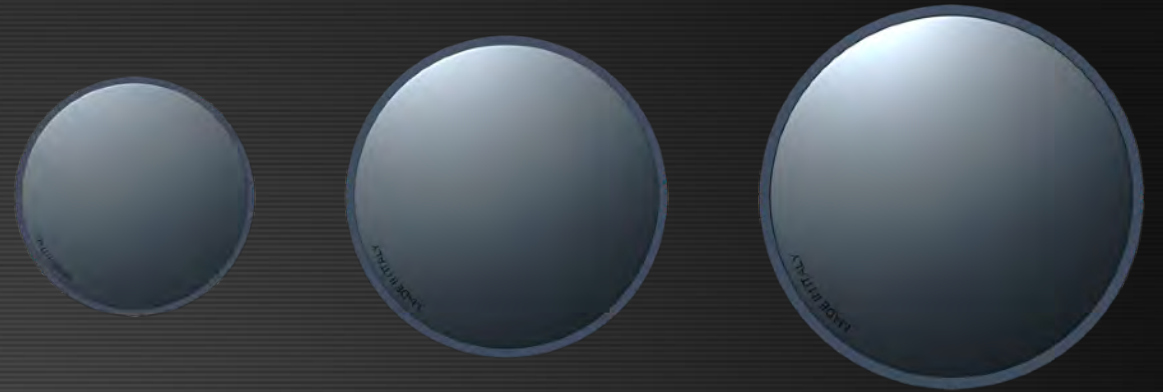
# BIPOLAR

CODE	DESCRIPTION
YTX-MAN-B	Handpiece for Res/Cap Bipolar Applications
YTX-ELCAP41B	Capacitive Bipolar Electrode Ø 41 mm
YTX-ELCAP61B	Capacitive Bipolar Electrode Ø 61 mm
YTX-ELCAP81B	Capacitive Bipolar Electrode Ø 81 mm
YTX-VERT	Resistive Bipolar Paravertebral Electrode (adjustable heads distance)



# NEUTRO DINAMICO®

CODE	DESCRIPTION
YTX-MAN-ND	Neutro Dinamico® Handpiece
YTX-CAVO-MULTI	Multifunctional Aux Cable
YTX-ELND41	Neutro Dinamico® Electrode Ø 61 mm
YTX-ELND61	Neutro Dinamico® Electrode Ø 61 mm
YTX-ELND81	Neutro Dinamico® Electrode Ø 81 mm



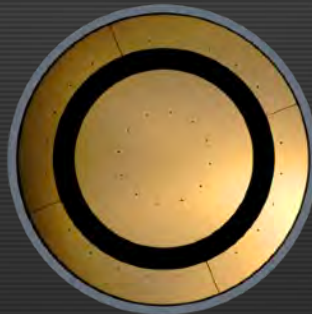
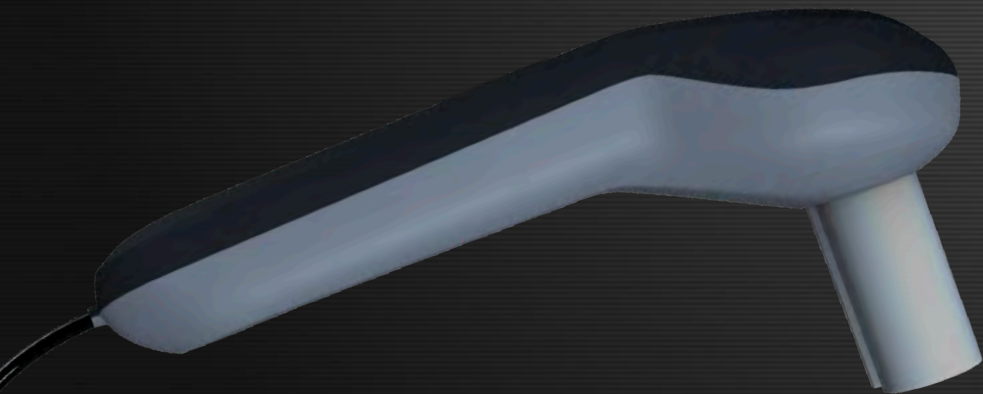
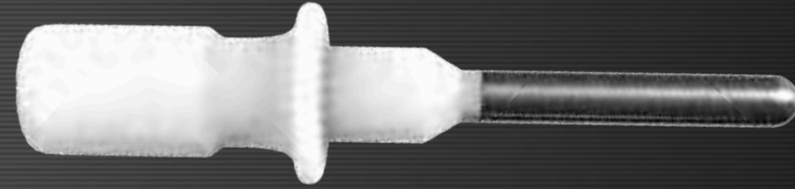
# AUTOMATIC APPS

CODE	DESCRIPTION
ELAUTO	Kit for Static Automatic Applications including: Main cable and connections 4 resistive clips electrodes 2 elastic bands



# INTIMITY

CODE	DESCRIPTION
YTX-MAN-B	Handpiece for Res/Cap Bipolar Applications
ENDO	Endoprobe Unipolar vaginal Probe Ø 20 mm
YTX-ENDO-B	Endoprobe Bipolar vaginal Probe Ø 20 mm
ENDO-A	Endoprobe Unipolar anal Probe Ø 12 mm
YTX-ELCAP41B	Capacitive Bipolar Electrode Ø 41 mm
ELAUTO	Kit for Static Automatic Applications including: Main cable and connections 4 resistive clips electrodes 2 elastic bands
POINT	Unipointer



# BEAUTY

CODE	DESCRIPTION
YTX-MAN-B	Handpiece for Res/Cap Bipolar Applications
YTX-ELCAP41	Capacitive Unipolar Electrode Ø 41 mm
YTX-ELCAP61	Capacitive Unipolar Electrode Ø 61 mm
YTX-ELCAP81	Capacitive Unipolar Electrode Ø 81 mm
YTX-ELRES41	Resistive Unipolar Electrode Ø 41 mm
YTX-ELRES61	Resistive Unipolar Electrode Ø 61 mm
YTX-ELRES81	Resistive Unipolar Electrode Ø 81 mm
YTX-ELCAP41B	Capacitive Bipolar Electrode Ø 41 mm
YTX-ELCAP61B	Capacitive Bipolar Electrode Ø 61 mm
YTX-ELCAP81B	Capacitive Bipolar Electrode Ø 81 mm
ELAUTO	Kit for Static Automatic Applications including: Main cable and connections 4 resistive clips electrodes 2 elastic bands
POINT	Unipointer



# TRIGGER & FASCIA

CODE	DESCRIPTION
IASTM-2	Fascia Multifunctional Tool
POINT	Unipointer



# JOULE MODE

A revolutionary system that includes both software and hardware. Enabling the Joule Pack function allows operators to work by controlling the quantity of energy delivered to the target tissues.

< JOULES

Set the amount of energy in JOULES

Total Energy  
29.600 J



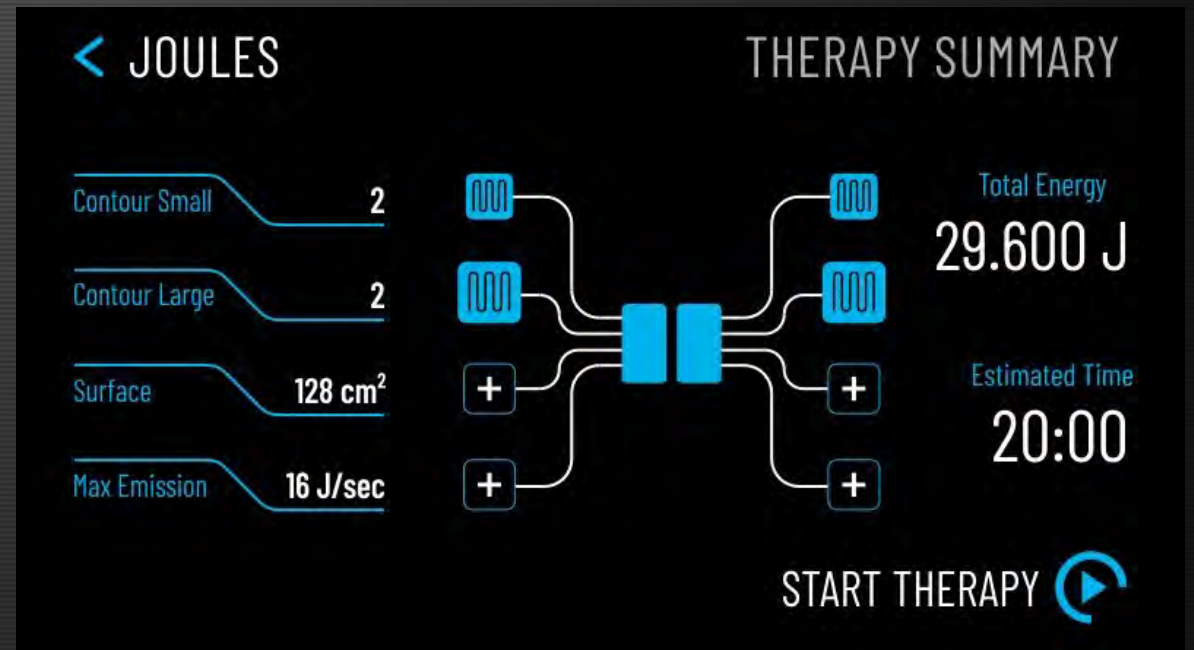
CONTOUR  
Static System 

START THERAPY 

# JOULE MODE

The energy is calculated by a dedicated program that measures the absorbed Joules. This system makes it possible to set the energy dose specifically effective for a given pathology on the basis of scientific tests.

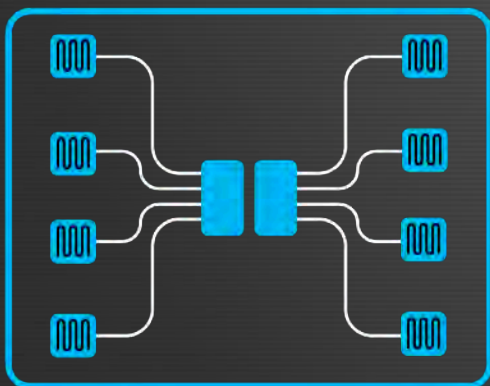
- Octopus Kit Included



# JOULE MODE

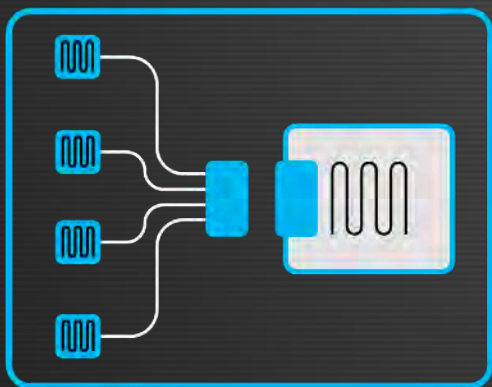
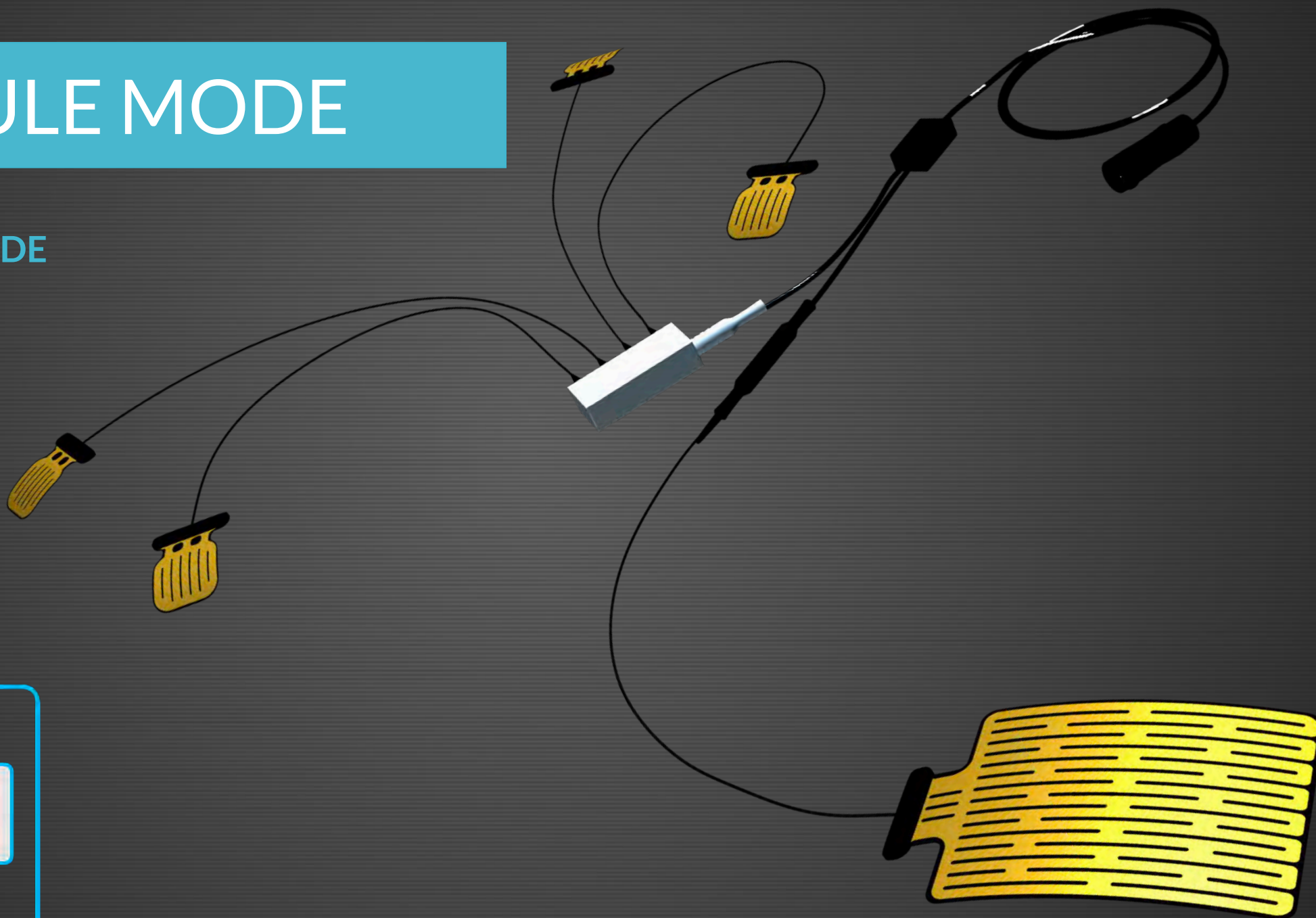
- Contour/Octopus Kit

DESCRIPTION
8 Contour Electrodes Large Size
8 Contour Electrodes Small Size
8 Contour Electrodes Neutral Size
1 Black Hub
1 White Hub
2 Elastic Bands 100 cm
1 Roll of Kinesio Tape



# JOULE MODE

UNIPOLAR MODE



# PORTABILITY



The YTX trolley is specifically designed to contain the device and all the accessories!  
(IATA Cabin Size)

## Core & System

Choose the power, frequencies, and forms of emission

## Aux Output

The doorway to a whole world of new treatment possibilities

## Accessories

Applicators designed to reach specific therapeutic targets

## Practicality

Bag, trolley, and consumables to complete your own configuration

## Details

YoutecarX is available in different colours. Choose yours!

# CONSUMABLES

NEW!  
Intimty Gel  
Pure Cream



## Core & System

Choose the power, frequencies, and forms of emission

## Aux Output

The doorway to a whole world of new treatment possibilities

## Accessories

Applicators designed to reach specific therapeutic targets

## Practicality

Bag, trolley, and consumables to complete your own configuration

## Details

YoutecarX is available in different colours. Choose yours!

# COLOURS



## Core & System

Choose the power, frequencies, and forms of emission

## Aux Output

The doorway to a whole world of new treatment possibilities

## Accessories

Applicators designed to reach specific therapeutic targets

## Practicality

Bag, trolley, and consumables to complete your own configuration

## Details

YoutecarX is available in different colours. Choose yours!

# CONFIGURATION STEP BY STEP

Create your own Tecartherapy Device

## Base Configuration:

**Power:** 150 Watt

**Frequency:** 500 KHz

**Output:** Unipolar

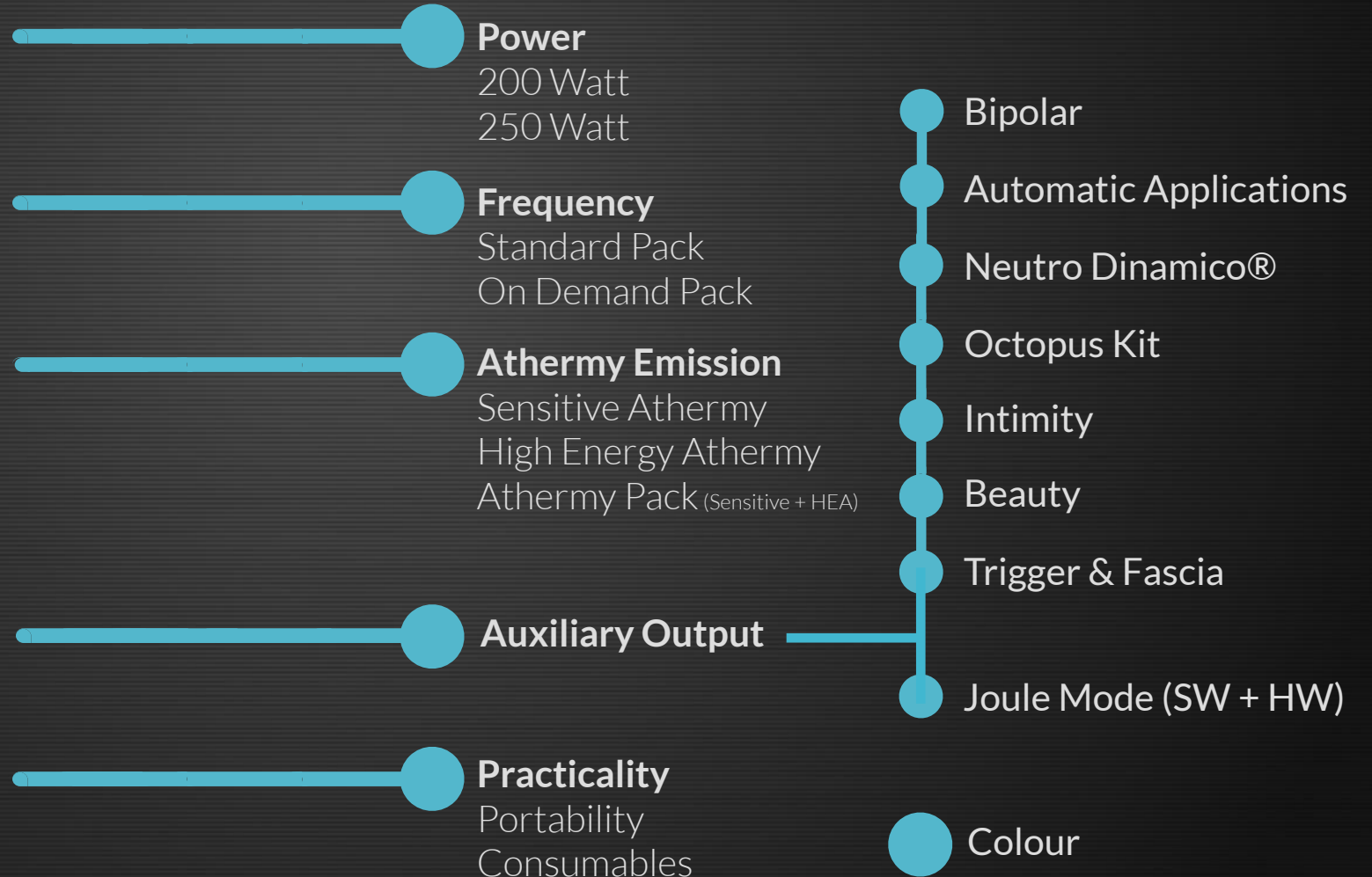
**Emission:** Continuous



## Includes:

- 1 power cable
- 1 cable for unipolar applications
- 1 unipolar handpiece
- 1 steel neutral electrode
- 1 resistive electrode Ø 61 mm
- 1 capacitive electrode Ø 61 mm
- Cable with clamp for disposable neutral electrode
- Disposable gel adhesive electrode (5 pcs)

## Customization Options:





# THE PRICE? YOU CHOOSE

BASE MODEL

CUSTOMIZATIONS

TOP MODEL

€

€€

€€€

€€€€

# YoutecarX Base

## READY FOR ACTION

Everything you need to start working



### Configuration:

**Power:** 150 Watt

**Frequency:** 500 KHz

**Output:** Unipolar

**Emission:** Continuous

### Accessories Provided:

- 1 power cable
- 1 cable for unipolar applications
- 1 unipole handpiece
- 1 steel neutral electrode
- 1 resistive electrode Ø 61 mm
- 1 capacitive electrode Ø 61 mm
- cable with clamp for disposable neutral electrode
- disposable gel adhesive electrode (5 pcs)

# INSPIRATIONS

## YOUTECARX MEETS ALL PHYSIOTHERAPISTS' NEEDS

YoutecarX can be fully customized by professionals for their own specific needs.

There is also a choice of configurations designed for specific Targets: Sport, Intimty, Beauty, Fascia, FisiOTop, Joule.

**Discover the Inspirations we have created!**

INSPIRATION CONFIGURATIONS ARE DISCOUNTED 5% ON LIST PRICE



# SPORT

## BASIC VERSION EQUIPMENT AND ACCESSORIES +

- **POWER:** 250W
- **FREQUENCY:** 500 KHz – 750 KHz – 1 MHz (Frequency Pack Standard)
- **OUTPUT:** Auxiliary Outlet Enabled (Multifunctional Cable Included)
- **EMISSION:** Athermy Pack (HEA + Sensitive)
- 2 Resistive Unipolar Electrodes (Ø 41, 81 mm)
- 2 Capacitive Unipolar Electrodes (Ø 41, 81 mm)
- 1 Neutro Dinamico® Handpiece
- 1 Neutro Dinamico® Electrode (Ø 61mm)
- 1 Octopus Kit

# BEAUTY

## BASIC VERSION EQUIPMENT AND ACCESSORIES +

- **POWER:** 200W
- **FREQUENCY:** 500 KHz – 750 KHz – 1 MHz (Frequency Standard Pack)
- **OUTPUT:** Auxiliary Outlet Enabled (Multifunctional Cable Included)
- **EMISSION:** Sensitive Athermy
- 1 Resistive Unipolar Electrode (Ø 81 mm)
- 1 Capacitive Unipolar Electrode (Ø 81 mm)
- 1 Handpiece for Res/Cap Bipolar Applications
- 1 Resistive Bipolar Electrode Facelift
- 1 Capacitive Bipolar Electrode (Ø 41 mm)
- 1 Unipointer

# INTIMITY

## BASIC VERSION EQUIPMENT AND ACCESSORIES +

- **POWER:** 200W
- **FREQUENCY:** 500 KHz – 750 KHz – 1 MHz (Frequency Standard Pack)
- **OUTPUT:** Auxiliary Outlet Enabled (Multifunctional Cable Included)
- **EMISSION:** Sensitive Athermy
- 1 Resistive Unipolar Electrode (Ø 41 mm)
- 1 Capacitive Unipolar Electrode (Ø 41 mm)
- 1 Handpiece for Res/Cap Bipolar Applications
- 1 Capacitive Bipolar Electrode (Ø 41 mm)
- 1 Endoprobe Unipolar vaginal Probe Ø 20 mm
- 1 Endoprobe Unipolar anal Probe Ø 12 mm
- 1 Elauto Kit for Static-Automatic applications

YOULECAR



# FASCIA

## BASIC VERSION EQUIPMENT AND ACCESSORIES +

- **POWER:** 200W
- **FREQUENCY:** 300 KHz – 500 KHz – 750 KHz - 1 MHz (Frequency On Demand Pack)
- **OUTPUT:** Auxiliary Outlet Enabled (Multifunctional Cable Included)
- **EMISSION:** HEA (High Energy Athermy)
- 1 Fascia Multifunctional Tool
- 1 Handpiece for Res/Cap Bipolar Applications
- 3 Capacitive Bipolar Electrodes (Ø 41, 61, 81 mm)
- 1 Resistive Bipolar Paravertebral Electrode (adjustable heads distance)
- 1 Unipointer

# JOULE

## BASIC VERSION EQUIPMENT AND ACCESSORIES +

- **POWER:** 200W
- **FREQUENCY:** 500 KHz (included)
- **OUTPUT:** Auxiliary Outlet Enabled (Multifunctional Cable Included)
- **EMISSION:** Continuous (included)
- **JOULE MODE:** Enabled
- 1 Octopus Kit

# FISIOTOP

## BASIC VERSION EQUIPMENT AND ACCESSORIES +

- **POWER:** 250W
- **FREQUENCY:** 300 KHz – 500 KHz – 750 KHz - 1 MHz (Frequency Pack on Demand)
- **OUTPUT:** Auxiliary Outlet Enabled (Multifunctional Cable Included)
- **EMISSION:** Athermy Pack
- 2 Resistive Unipolar Electrode (Ø 41, 81 mm)
- 2 Capacitive Unipolar Electrode (Ø 41, 81 mm)
- 1 Handpiece for Res/Cap Bipolar Applications
- 3 Capacitive Bipolar Electrodes (Ø 41, 61, 81 mm)
- 1 Resistive Bipolar Paravertebral Electrode (adjustable heads distance)
- 1 Neutro Dinamico® Handpiece
- 3 Neutro Dinamico® Electrodes (Ø 41, 61, 81 mm)
- 1 Octopus Kit



YOU IECAR



FOR MORE INFORMATION  
CONTACT OUR SPECIALISTS



By Golden Star s.r.l  
Via Enrico Pallini, 9 - Rome (Italy)

[www.youtecarx.com](http://www.youtecarx.com)